

HOW MUCH COMPOST IS IN THIS BAG?

5

STANDARD SEED TRAYS
34 cm x 21 cm (13.5" x 8.25")

USEFUL TIPS

- Some plants are hungrier than others so may require feeding earlier. If leaves start to pale this is a sign to start feeding, and we recommend using a **Miracle-Gro® Plant Food**.
- Try to avoid compost in pots drying out, and don't let them sit in water either, roots don't like being waterlogged!
- Peat free will look and feel different. We recommend that you check before watering using the 'finger test'. Pop your finger about 3 cm into the compost. If it is dry, get watering, if not, wait a bit longer.
- Sometimes you might see some white mould on your compost. **This is not harmful** to your plants and will disappear naturally.
- For all ericaceous (acid-loving) plants we strongly recommend using **Miracle-Gro® Peat Free Premium Azalea, Camellia, Rhododendron Ericaceous Plants Compost**.

CARING FOR PLANTS & THE PLANET

PEAT FREE + TLC = BETTER (PLANTS+ PLANET)

GOING PEAT FREE MEANS:



A few more bits in the bag



A check before you water



A feed when needed



Better for your plants, better for the planet

NOT ALL PEAT FREE COMPOST IS CREATED EQUAL

#FORPLANTSFORPLANET

RESPONSIBLE SOURCING

We are actively working on improving the responsible sourcing profile of our compost mixes year on year. Miracle-Gro® compost contains forest by-products, carefully processed to help you grow plants that improve your environment and make the world a more beautiful place.

With our partners we have restored more than **3,000 hectares of peatland** in the past 30 years.



THIS BAG IS MADE FROM 60% RECYCLED MATERIAL



HEALTH, SAFETY & STORAGE ADVICE

- Use in a well ventilated place and avoid breathing in dust.
- Always wear gloves.
- Wash hands after use.
- Open bag carefully and reseal after use.
- Keep the bag closed when in storage to prevent drying out.
- Storage from one year to another may affect performance.
- Store in a cool place, away from direct sunlight.
- Keep away from pesticides.



We are proudly supporting **GREENFINGERS CHARITY*2**

for more information visit **miracle-gro.co.uk** or call **01276 401300**



Evergreen Garden Care UK Ltd, 1 Archipelago, Lyon Way, Frimley, Surrey GU16 7ER
EU Importer: Evergreen Garden Care France SAS, 4 Allée des Séquoias, 69760 LIMONEST, FRANCE, Tel: +353 818 882 479
Made under licence from OMS Investments, Inc. Miracle-Gro® is the trademark of OMS Investments, Inc.
*2Registered Charity Number 1076640
*3See code of practice at www.growingmedia.co.uk



20 litres when filled – volume may reduce by up to 10%*3



BGXXXX

Miracle-Gro®

PEAT FREE

PREMIUM

Seeds, Plugs & Young Plants Compost

ROOTED IN SCIENCE



AIDS GERMINATION

Contains a special coir and woodfibre combination that creates a perfect balance of air and water, to aid germination and grow strong roots.



11 VITAL NUTRIENTS

This compost contains a careful balance of 11 nutrients that give your seeds and young plants the best start and help them to grow strong and healthy – including nitrogen for green growth and phosphorus for healthy roots.



5 WEEKS FEED

HOW TO USE

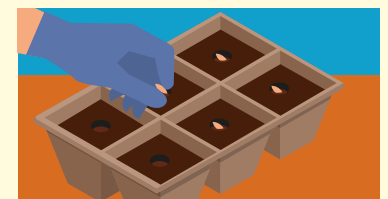


ALWAYS WEAR GLOVES

SEEDS



Fill a clean seed or module tray with the compost. Level off the compost with your hand or a ruler. **Firm lightly and water** using a fine rose.



Sow the seeds thinly. Cover the seeds lightly with compost, firming lightly. For smaller seeds such as Petunia or Lobelia there is no need to cover the seed.



Cover seed tray with a lid to retain warmth and moisture but remove cover once germinated. **Make sure the tray is kept out of direct sunlight.**



Follow the recommendations on the seed packet for each plant. When the seedlings are ready to be transplanted into individual pots, take care to handle them by the leaves and not by the stems or roots.

PLUGS & YOUNG PLANTS



Fill the container with the compost.



Place the plug or young plant in a hole in the compost.



Firm lightly and water using a fine rose. Keep in a warm, well-lit place, out of direct sunlight. Water again only when the compost dries out. Only plant out once the risk of frost has gone.



After 5-6 weeks, plants should be potted up using **Miracle-Gro® Peat Free All Purpose Compost**. After that, maintain strong growth by feeding with **Miracle-Gro® Plant Food**.

Ordinary Garden Soil



Miracle-Gro® Premium Peat Free All Purpose Compost

GUARANTEED GROWS PLANTS TWICE AS BIG!*

*Our scientific trials prove that **Miracle-Gro Premium Peat Free All Purpose Compost** grows plants **twice as big** as ordinary garden soil.