

UK's LEADING WEEDKILLER BRAND†

ROUNDUP® Weedkiller
Path Optima kills:

PUMP 'N GO PRESSURE SPRAYER

- ✓ CLOVER
- ✓ CHICKWEED
- ✓ COMMON GROUNDSEL
- ✓ MOSS
- ✓ ANNUAL MEADOW-GRASS

*** THIS CLAIM IS PROVIDED TO HELP DISTINGUISH FROM OTHER FORMULAS THAT MAY CONTAIN GLYPHOSATE.**

INSTRUCTIONS FOR USE FOR USE ONLY AS AN AMATEUR WEEDKILLER AND MOSSKILLER. READ ALL SAFETY INSTRUCTIONS BEFORE USE.

- ✓ Use all around permeable paths, patios, driveways and gravel areas.
- ✓ Fast acting, the first visible effects may be seen within 2-3 hours.
- ✓ Kills a broad range of annual weeds, grasses and moss.
- ✓ Suppresses the top-growth of perennial weeds like dandelion and sowthistle.
- ✓ Rainfast 3 hours after application.
- ✓ Active ingredient naturally breaks down in soil.

WHEN TO USE

- Apply in warm, calm, dry, conditions during April - November when weeds are actively growing.
- Do not apply when there is a risk of frost or drought as weeds will not be actively growing.
- Reapply if it rains within 3 hours of application.
- Reapply 7 to 21 days if required.
- Maximum 4 applications per year.



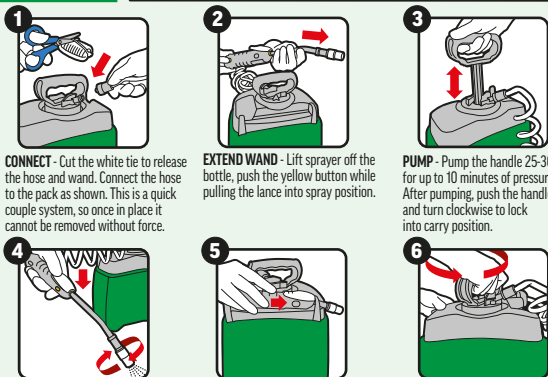
WHERE TO USE



- Use to kill weeds on gravel areas, permeable paths, driveways, patios overlying soil and along fences. Ideal before cropping and ground clearance before cultivation.
- Can be used to clean up weedy or mossy ground before planting veg, flowers, bushes and trees, and to renovate overgrown areas.
- For the control of weed and mosses around ornamental garden plants and trees, on areas not intended to bear vegetation.
- Most effective when applied to newly established weeds or those less than 10-15 cm tall.
- Do not direct spray or allow spray drift onto cultivated plants and lawn as this product destroys all green plant parts.

HOW TO USE

SHAKE WELL BEFORE USE. Wear gloves and enclosed footwear. This pack treats up to 165 m². Application rate: 300 mL per 10 m².



CONNECT - Cut the white tie to release the hose and wand. Connect the hose to the pack as shown. This is a quick couple system, so once in place it cannot be removed without force.

EXTEND WAND - Lift sprayer off the bottle, push the yellow button while pulling the lance into spray position.

PUMP - Pump the handle 25-30 times for up to 10 minutes of pressure spray. After turning, push the handle down and turn clockwise to lock into carry position.

SPRAY 'N GO - Adjust spray pattern by turning the nozzle. Aim 50 cm from target weed and press white trigger. Spray to lightly wet the leaves avoiding run off.

AFTER USE - Push the yellow button and retract the wand to its original position, clip it onto the top of the pack for storage and to prevent accidental release of spray solution.

STORE - Push the pump handle down, turn both the pump handle and cap anti-clockwise to relieve pressure, then retighten before storage.

SAFETY INSTRUCTIONS

Protection during/in use:
KEEP OFF SKIN/AWAY FROM EYES. WASH OFF SPLASHES IMMEDIATELY. WASH HANDS AND EXPOSED SKIN AFTER USE.

Environmental protection:
To protect aquatic organisms and non-target plants do not apply on impermeable hard surfaces such as asphalt, concrete, cobblestones, tarmac, paving, patio and other situations with a high risk of run-off. Direct spray away from ponds and other surface water bodies. Risk to non-target insects or other arthropods. Avoid improper release into the environment. Do not contaminate water with the product and its container. Do not empty into drains.

Storage and disposal:
KEEP PRODUCT IN ORIGINAL CONTAINER, tightly closed in a safe place. Protect from frost. KEEP AWAY FROM FOOD, DRINK AND ANIMAL FEEDING STUFFS. KEEP PRODUCT AWAY FROM CHILDREN AND PETS. Do not re-use container for any other purpose.

RISK & SAFETY INFORMATION

TO AVOID RISKS TO HUMAN HEALTH AND THE ENVIRONMENT, COMPLY WITH THE INSTRUCTIONS FOR USE.

- Read carefully and follow all instructions.
- Keep out of reach of children.
- Do not eat, drink or smoke when using this product.
- If medical advice is needed, have product container or label at hand.
- Dispose of contents/container to a household waste recycling centre as hazardous waste except for empty containers which can be disposed of in the dustbin. Contact your local council for details.
- Contains reaction mass of 5-chloro-2-methyl-2H-isothiazol-3-one and 2-methyl-2H-isothiazol-3-one (3:1). May produce an allergic reaction.

†According to GfK Garden Care UK sales data 52 week (Sept 2022).

Evergreen Garden Care UK Ltd,
1 Archipelago, Lyon Way, Frimley, Surrey,
GU16 7ER, England
Telephone: +44 (0)1276 401 300
For more information visit:
www.roundup-garden.com
EU Importer
Evergreen Garden Care France SAS,
4 Allée des Séquoias, 69760 LIMONEST,
FRANCE, Tel: +353 818 882 479

Contains 43.1 g/L Pelargonic acid as an Emulsion, oil in water (EW).



FIND OUT MORE ONLINE



Keep children and pets away from treated areas until spray has dried

ROUNDUP® is a registered trademark and used under licence.



5 Litre e

