

UK's LEADING
WEEDKILLER BRAND†

MAPP No. 18692 PCS No. 06259

PUMP 'N GO
PRESSURE SPRAYER

is a fast acting weedkiller for use on unwanted vegetation. It can be used to kill broad leaved weeds and grasses in paths, drives, patios and around the bases of roses, ornamental shrubs and trees, including:

- ✓ BINDWEED
- ✓ NETTLES
- ✓ SOW THISTLE
- ✓ FAT HEN
- ✓ BLACK NIGHTSHADE
- ✓ CRABGRASS
- ✓ ANNUAL RYEGRASS

INSTRUCTIONS FOR USE

FOR USE ONLY AS A HOME GARDEN WEEDKILLER.

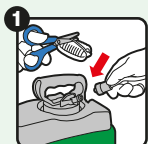
WHEN TO USE

- For best results treat small weeds at an early stage of growth and apply in warm, dry conditions (MAR-OCT).
- Spray at any time when the weeds are actively growing and have adequate leaf area to absorb the spray.
- A repeat treatment may be necessary if rain or drought conditions are expected.
- Apply in calm conditions to avoid drift onto cultivated plants.
- Treated areas can be re-planted/re-seeded a day after treatment.
- Maximum number of treatments: 4 per year.



HOW TO USE

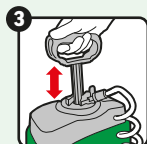
We recommend wearing waterproof gloves and gardening footwear.



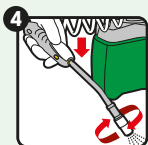
CONNECT - Cut the white tie to release the hose and wand. Connect the hose to the pack as shown. This is a quick couple system, so once in place it cannot be removed without force.



EXTEND WAND - Lift sprayer off the bottle, push the yellow button while pulling the lance into spray position.



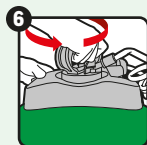
PUMP - Pump the handle 25-30 times for up to 10 minutes of spray. After pumping, push the handle down and turn clockwise to lock into carry position.



SPRAY - Adjust spray pattern by turning the nozzle. Aim 50 cm from target weed and press white trigger. Spray to lightly wet the leaves avoiding run off.



AFTER USE - Push the yellow button and retract the wand to its original position, clip it onto the top of the pack for storage and to prevent accidental release of spray solution.



STORE - Push the pump handle down, turn both the pump handle and cap anti-clockwise to relieve pressure, then retighten before storage.

- 5L to treat 50 m². Apply at no more than 100 ml/m². • Repeat treatment if necessary after a minimum of 14 days where re-growth occurs. • Spray nettles and ground elder when new leaves have unfolded fully in late spring. • Weeds may show first visible results within an hour of spraying, depending on weather conditions and the type of weed.

Poisons information: For information or to report a poisoning incident in Ireland, contact The National Poisons Information Centre (01 8092166), retain the label for reference.

WHERE TO USE

• This product is a multipurpose weedkiller for use in areas not intended to bear vegetation and unwanted vegetation. • Controls most weeds around the garden, e.g. gravel areas, hard surfaces, patios, tarmac, along fences and for edging lawns. • Use around the bases of roses, ornamental shrubs and trees, around trees of pome and stone fruit and under hedges (providing they are established, with woody bark). It can also be used to clean up weedy ground before sowing or planting.

RESTRICTIONS

• Avoid contact by spray and spray drift with cultivated plants and desired vegetation. • To avoid transfer to lawns and other desired vegetation, do not walk into treated areas until the product has dried. • **Caution: ROUNDUP® Speed Ultra** kills all green plant growth including lawn grasses. DO NOT apply to lawns and plants you want to keep.

SAFETY INSTRUCTIONS

Protection during/in use: Avoid contact with eyes. IN CASE OF CONTACT WITH EYES, RINSE IMMEDIATELY with plenty of water and seek medical advice. If swallowed, seek medical advice immediately and show this container or label. WASH OFF SPLASHES IMMEDIATELY. WASH HANDS AND EXPOSED SKIN AFTER USE. **Environmental protection:** Do not apply when rainfall is expected within 6 hours of application. Risk to non-target insects or other arthropods. Dangerous to bees. To protect bees and pollinating insects do not apply to plants when in flower. Do not use where bees are actively foraging. Do not apply when flowering weeds are present. Direct spray away from ponds and other surface water bodies. Do not contaminate water with the product or its container. Do not empty into drains. Use appropriate containment to avoid environmental contamination. **Storage and disposal:** KEEP OUT OF THE REACH OF CHILDREN AND PETS. KEEP PRODUCT IN ORIGINAL CONTAINER, tightly closed in a safe place. Keep away from food, drink and animal feeding stuffs. EMPTY CONTAINER COMPLETELY and dispose of safely. Do not re-use empty bottle. This material and its container must be disposed of in a safe way.

ROUNDUP® Speed Ultra

TO AVOID RISKS TO HUMAN HEALTH AND THE ENVIRONMENT, COMPLY WITH THE INSTRUCTIONS FOR USE.

- Read carefully and follow all instructions. • Keep out of reach of children.
- If medical advice is needed, have product container or label at hand.
- Do not eat, drink or smoke when using this product. • Dispose of contents/container to a household waste recycling centre as hazardous waste except for empty containers which can be disposed of by recycling. Contact your local council for details.

Evergreen Garden Care UK Ltd, 1 Archipelago, Lyon Way, Frimley, Surrey, GU16 7ER, England, Tel: +44 (0)1276 401 300. For more information visit: roundup-garden.com

EU Importer: Evergreen Garden Care, France SAS, 4 Allée des Séquoias, 69760 LIMONEST, FRANCE, Tel: +353 818 882 479.

MAPP No. 18692 PCS No. 06259



Contains 60 g/L Acetic acid in a ready to use solution.

FIND OUT MORE ONLINE



PROTECT FROM FROST
ROUNDUP® is a registered trademark and used under licence.
†According to GFK Garden Care UK sales data 52 week (Sept 2022).



Allow the spray to dry before walking or playing on treated areas

5 Litre e

