

ROUNDUP® Weedkiller Total Optima kills:

- ✓ **CLOVER** ✓ **CHICKWEED** ✓ **COMMON GROUNDSEL** ✓ **BLACK MEDICK** ✓ **ANNUAL MEADOW-GRASS**

*** THIS CLAIM IS PROVIDED TO HELP DISTINGUISH FROM OTHER FORMULAS THAT MAY CONTAIN GLYPHOSATE.**

INSTRUCTIONS FOR USE FOR USE ONLY AS AN AMATEUR WEEDKILLER. READ ALL SAFETY INSTRUCTIONS BEFORE USE.

- ✓ Use all around the garden on flower beds, borders and veg patches.
- ✓ Kills weeds in 24 hours under optimal conditions.
- ✓ Fast acting, the first visible effects may be seen within 2-3 hours.
- ✓ Kills a broad range of annual weeds.
- ✓ **Active ingredient naturally breaks down in soil.
- ✓ Soil is ready for replanting in 3 days.

WHEN TO USE

- Apply in warm, calm, dry, conditions during April - November when weeds are actively growing.
- Do not apply when there is a risk of frost or drought as weeds will not be actively growing.
- Reapply if it rains within 3 hours of application.
- Reapply 7 to 21 days if required.
- **Maximum 4 applications per year.**

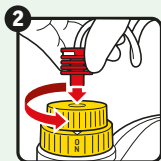


HOW TO USE

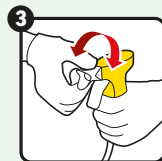
SHAKE WELL BEFORE USE.
Wear gloves and enclosed footwear.



Cut the plastic tie connecting the sprayer to the bottle with scissors. Hold the sprayer and pull out the red connector.



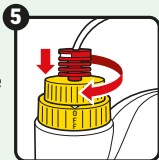
Insert the red connector firmly into the cap until it is tightly engaged. Press and twist the top of the cap anti clockwise to 'ON' position (1/2 of a turn).



Twist the sprayer nozzle to 'Jet' or 'Stream' position (wide or narrow spray, depending on your area to treat) and prime by squeezing the trigger a few times.



Spray the weeds evenly ensuring a good coverage of the leaves.



After use: Press and twist the top of the cap clockwise to the 'OFF' position (1/2 of a turn). Squeeze the trigger to clear the nozzle. Rotate the sprayer nozzle to 'STOP' position and clip the sprayer back into the holder without disconnecting the red connector.

• This pack treats up to 100 m². • Application rate: 300 mL per 10 m².

Poisons information: For information or to report a poisoning incident in Ireland, contact The National Poisons Information Centre (01 8092166), retain the label for reference.

WHERE TO USE



- Use to kill weeds on flower beds, borders, vegetable patches, around roses, shrubs, hedges, greenhouses and along fences. Ideal before cropping and ground clearance before cultivation.
- Can be used to clean up weedy ground before planting vegetables, flowers, bushes and trees, and to renovate overgrown areas.
- For the control of weeds around ornamental garden plants, trees and in areas not intended to bear vegetation.
- Most effective when applied to newly established weeds or those less than 10-15 cm tall.
- Do not direct spray or allow spray drift onto cultivated plants and lawn as this product destroys all green plant parts.

SAFETY INSTRUCTIONS

Protection during/in use: KEEP OFF SKIN/AWAY FROM EYES. WASH OFF SPLASHES IMMEDIATELY. WASH HANDS AND EXPOSED SKIN AFTER USE. **Environmental protection:** To protect aquatic organisms and non-target plants do not apply on impermeable hard surfaces such as asphalt, concrete, cobblestones, tarmac, paving, patio and other situations with a high risk of run-off. Direct spray away from ponds and other surface water bodies. Risk to non-target insects or other arthropods. Avoid improper release into the environment. Do not contaminate water with the product and its container. Do not empty into drains. **Storage and disposal:** KEEP PRODUCT IN ORIGINAL CONTAINER, tightly closed in a safe place. Protect from frost. KEEP AWAY FROM FOOD, DRINK AND ANIMAL FEEDING STUFFS. KEEP PRODUCT AWAY FROM CHILDREN AND PETS. Do not re-use container for any other purpose.

ROUNDUP® Weedkiller Total Optima

Contains reaction mass of 5-chloro-2-methyl-2H-isothiazol-3-one and 2-methyl-2H-isothiazol-3-one (3:1). May produce an allergic reaction.

TO AVOID RISKS TO HUMAN HEALTH AND THE ENVIRONMENT, COMPLY WITH THE INSTRUCTIONS FOR USE.

- Read carefully and follow all instructions.
- Keep out of reach of children.
- Do not eat, drink or smoke when using this product.
- If medical advice is needed, have product container or label at hand.
- **For the UK only:** Dispose of contents/containers to a household waste recycling centre as hazardous waste except for empty containers which can be disposed of in the dustbin. Contact your local council for details.
- **For ROI only:** Dispose of contents/container to a household waste recycling centre as hazardous waste except for triple rinsed empty containers which can be disposed of by recycling or in the dustbin. Contact your local council for details.

Evergreen Garden Care UK Ltd, 1 Archipelago, Lyon Way, Frimley, Surrey, GU16 7ER, England,

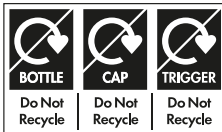
Tel: +44 (0)1276 401 300. For more information visit: roundup-garden.com

EU Importer: Evergreen Garden Care, France SAS, 4 Allée des Séquoias,

69760 LIMONEST, FRANCE, Tel: +353 818 882 479.

MAPP No. 20721 PCS No. 06655

Contains 43.1 g/L Pelargonic acid as an Emulsion, oil in water (EW).



FIND OUT MORE ONLINE



PROTECT FROM FROST
ROUNDUP® is a registered trademark and used under licence.
†According to GFK Garden Care UK sales data 52 week (Sept 2022).



Keep children and pets away from treated areas until spray has dried

3 Litre e

